

How to bring industry/energy companies on board?

Dr. Giacomo Massimo CIULLO

30 November 2010

URBACT II



How to bring industry/energy companies on board?

› **Industrial development**

› **Urban development**

› **Economic crisis**

› **Energy policies**

- national law;
- regional law;
- local policies.

general overview



Regione Puglia

Industrial development of the City of Brindisi

- › the ‘too fast’ industrialization has determined an urbanization without planning;
- › sadly, this development did not bring an infrastructural upgrade and did not increase permanent employment;
- › as the population grew, many people left the country to come to town;
- › so, new accommodations were required and new popular districts of social housing were built with public resources: Perrino, Sant’Elia and Paradiso. They were 'dormitory quarters'.
- › The Municipality didn't know how to manage this urban development, adopting an inadequate Urban City Plan.
- › The City of Brindisi did not design a new urban plan, yet.
- › The ‘shape’ of the town isn't the best for the democratic life of the people.

IN THE MEANWHILE POLLUTION BECAME MORE AND MORE AGGRESSIVE!

Industrial development of the City of Brindisi

- › between the end of the sixties and the beginning of the seventies there was a forced development of local economy;
- › two industrial branches were mainly concerned: chemistry and energy.

The leader companies: Montecatini– Enichem for the chemical section.



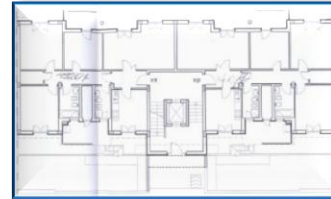
And Enel, Edipower, Enipower, for the coal fuel energy.



- › These settlements have changed the social and economic asset of the local community and territory, completely.

Urban Development

- › between 60's e 70's, three popular districts of social housing were built with public resources:
- › “Paradiso”, case study of the “CASH” project;



- › “Sant’Elia”



- › “Perrino”



Economic crisis

- › about the end of the 80's the crisis of chemistry started and it happened that ***A PLANT EXPLODED.***
- › **Results:**
 - employment during construction;
 - employment for the plant maintenance;
 - employment decreased during the production.
- › **From 7.000 down to 2.000 workers, today!**



Energy policies

Energy efficiency in Italy

Law n° 10 / 09.01.1991

- focuses on heating systems
- first law about energy efficiency



Decree n° 192 / 19.08.2005

- enlarges fields of application
- rules energy issues from renewable sources



Decree n° 311 / 29.12.2006

- modifies the 192/05
- makes energy production from solar panels mandatory for new building (more than 1.000 m²)



Decree n° 59 / 02.04.2009

- modifies the 192/05

Regional Law n° 13 / 10.06.2008

- introduces the building energy ID that is supposed to be signed by qualified professionals

Regional Regulation n° 10 / 10.02.2010

- explains how to make effective the Law n° 13

Regional Law: Regional Environmental Energy Plan 2006

Energy policies

› Local policies:

- › after quite a long time people began to realize the new situation and in 1996 the Municipality signed a convention with the company producing coal energy.
- › nevertheless this convention has never been fully respected, but the convention is the only instrument in the hands of the Municipality to bring industry/energy companies on board.
- › it is important to have a convention, so the local government – in particular the Municipality – is trying to reach a new agreement with ENEL, updated to the new energy policies and to the expectations of people.



LOCAL COORDINATION "CASH"

Assessorato alla Programmazione Economica e Sviluppo

Assessore: **Mauro D'Attis**, Vice Sindaco

Dirigente: dr. **Angelo Roma**

Assessorato alla Relazioni e cooperazione internazionali

Assessore: dr. **Giacomo Massimo Ciullo**

Dirigente: dr. **Angelo Roma**

Assessorato alle Politiche Abitative

Assessore: **Teodoro Scarano**

Dirigente: arch. **Valerio Costantino**, Local Coordinator Cash

Consulenza tecnico-scientifica:

Dipartimento di Ingegneria

Università degli Studi di Pescara

prof. Francesco Girasante, responsabile di ricerca

arch. Giammichele Panarelli, Urbact expert, coordinator

arch. Beniamino Attoma Pepe



Thank for your attention!

